

Otago Yacht Club Wickliffe Bay Race/ Cruise

Sunday 28 February 2021

Coastal Race – Carey’s Bay – Wickliffe Bay – Carey’s Bay

Open to Keelers and Trailer Yachts *

Course

– Carey’s Bay Shore Start.

(Line is between pile 24a and the white staff adjacent to the scrubbing grid on Aramoana Road.)

Start: 0930hrs. Count down will be via radio, channel 62. You will be given a 5 minute call, a 1 minute call and final go.

Should there be a lack of wind yachts will be directed (Ch. 62) to motor to the heads and the race will be started there as soon as fleet is assembled.

– Turning mark in Wickliffe Bay. 45°50'26”S 170°44'52" E

Turning mark is **600m** directly north of Southern point of Wickliffe Bay (no buoy). Sight line from Harbour cone and end of sand dune bushes at north side of entrance to Papanui Inlet. See attached map.

– Carey’s Bay finish.

*LW Tairaroa Head: 1049 hrs (0.3). HW Tairaroa Head: 1710 hrs (1.2)

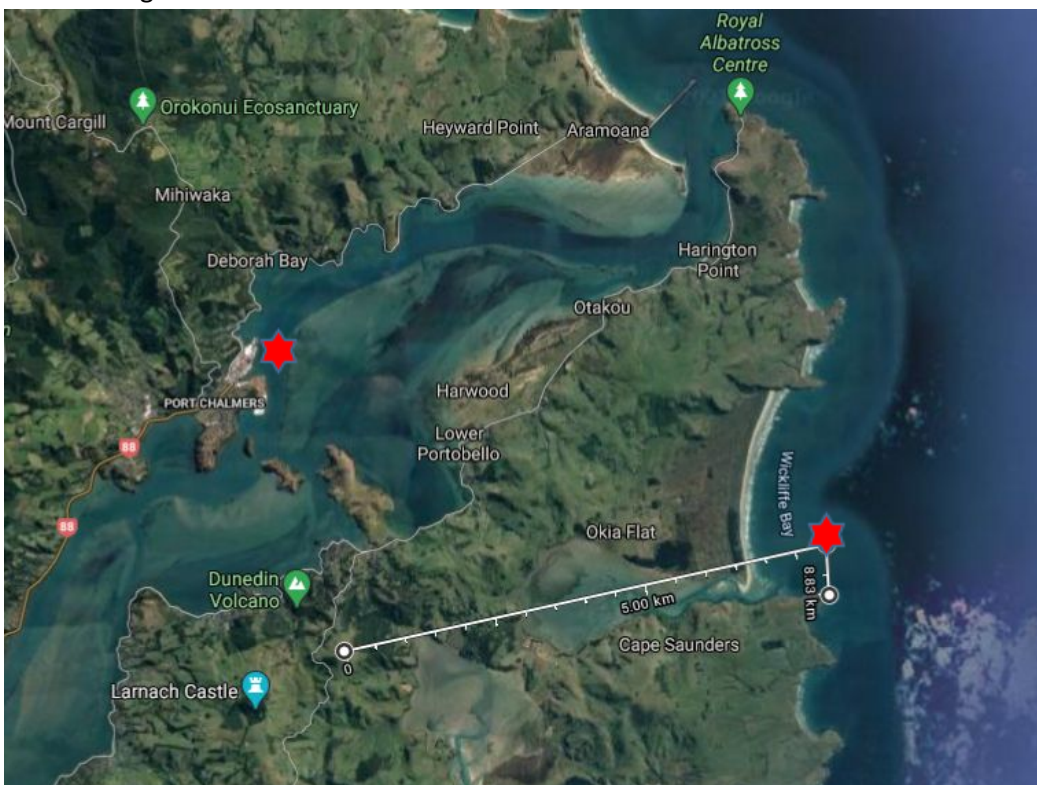
* Note: It is essential that all yachts in this race have a working VHF radio switched on and turned to **Channel 62** throughout the race. This is not only for safety reasons but also for receiving details of any course changes from the race organisers.

* Life Jackets to be worn at all times while racing.

Entries Text Race Officer Pete Wilhelmsen 021 169 2359

Details required; name of yacht, skippers name and total POB. Please register early. Late entries can be taken via VHF Ch 62 or by text or by VHF Channel 62 from 0900 hrs on the day.

Time Keeping. Yachts must record their finishing time and text them to Pete 021 169 2359 as soon as practicable on finishing.



Turning mark is 600m directly north of Southern point of Wickliffe Bay (no buoy). Sight line from Harbour Cone and end of trees north side of entrance to Papanui Inlet.

