

# Otago Yacht Club Wickliffe Bay Race/Cruise Sunday 12 March 2023

## Coastal Race – Carey’s Bay – Wickliffe Bay – Carey’s Bay

**Race Entry :** ONLINE ENTRIES ONLY. Open to Keelers and Trailer Yachts. Entries close 2100 hrs Saturday 11 March. After entry, entrants can update or withdraw by texting or calling the Race Officer Pete Wilhelmsen 021 169 2359. A minimum of 3 yachts are required for the event to go ahead.

**Safety & Disclaimer of Liability:** Competitors participate in the event entirely at their own risk. The OYC will not accept any liability for material damage or personal injury or death sustained in conjunction with, or prior to, during, or after the event. All competitors must wear lifejackets at all times while racing. Each yacht must carry and monitor a working VHF radio switched on to Ch 62. This is not only for safety reasons but also receiving details of any course changes from the Race Officer. Any yacht withdrawing from the event must notify the Race Officer at the earliest opportunity by phone or text.

### Course - Carey’s Bay Shore Start/Finish.

The shore Start / Finish line is the transit line between Red Pile 24a and the White Staff by the scrubbing grid on Aramoana Road.

**Start:** 10:00 hrs. Standard 5 minute countdown will be given from 09:55 hrs with flags and hooter.

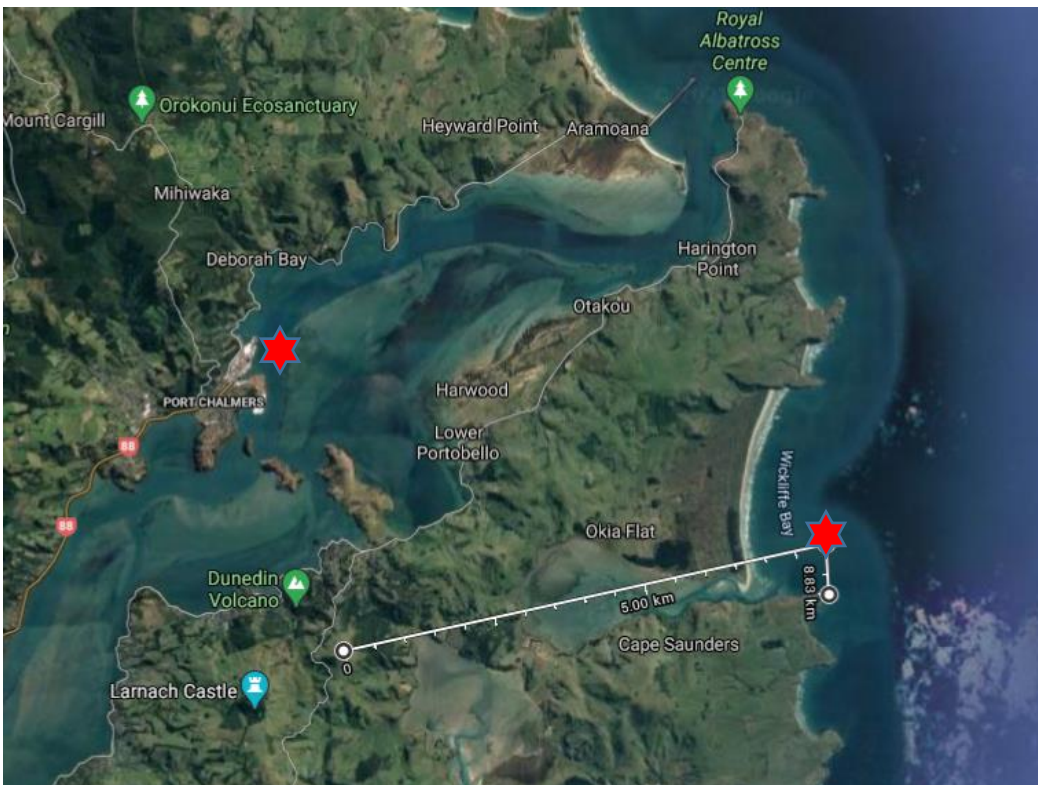
(Should there be a lack of wind, yachts may be directed on VHF Ch 62 to motor to Taiaroa Heads and the race will be started there as soon as the fleet is assembled on a transit line from the White Staff on the mole and Green Pile #1a.

– **Turning Mark in Wickliffe Bay. ( S 45 . 50 . 25 E 170 . 44 . 54 )**

Turning mark is **500m** directly north of the Southern point of Wickliffe Bay (no buoy). Sight the line from Harbour Cone and the end of sand dune bushes at the north side of the entrance to Papanui Inlet. See the attached map.

– **Carey’s Bay Finish & Time Keeping.** Yachts must record their finishing time when passing through the Start / Finish line at Carey’s Bay and text them to Pete 021 169 2359 as soon as practicable on finishing.

HWPC : 07:41 hrs (1.8m)



Turning mark is 500m directly north of Southern point of Wickliffe Bay (no buoy). Sight line from Harbour Cone and end of trees north side of entrance to Papanui Inlet.

□